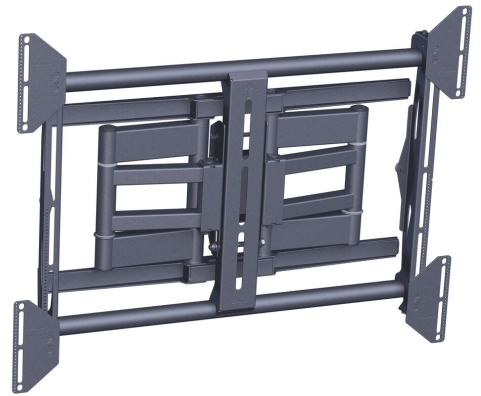
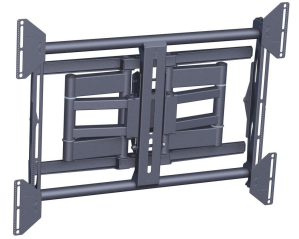




## **PFW 6851 Display Wall Mount turn & tilt**

The PFW 6851 is a swingout mount for displays up to 80 kg / 175 lbs. Typically fits displays ranging from 42 - 85 inch or displays with a mounting pattern of 200 x 200 mm to 800 x 600 mm.





## PFW 6851 Display Wall Mount turn & tilt

# Specifications

Article number (SKU)	7368510
Colour	Black
EAN single box	8712285323386
Product size	L
TÜV certified	Yes
Tilt	Tilt up to 10°
Turn	Up to 90°
Guarantee	5 years
Min. screen size (inch)	42
Max. screen size (inch)	85
Max. weight load (kg/Lbs)	80 / 176.37
Max. height of interface (mm)	671
Max. width of interface (mm)	871
Levelling function	Post-installation horizontal levelling
Lock options	No lock
Max. distance to the wall (mm / inch)	404 / 15.91
Max. horizontal hole pattern (mm)	800
Max. screen size (inch)	85
Max. vertical hole pattern (mm)	600
Min. distance to the wall (mm / inch)	79 / 3.11
Min. screen size (inch)	42
Number of pivot points	3
Orientation	Landscape

VOGEL'S HOLDING BV (©)

All rights reserved.  
Subject to printing errors,  
technical and price  
amendments.

Date: 2023-01-28



**Vogel's.** For Sure.