

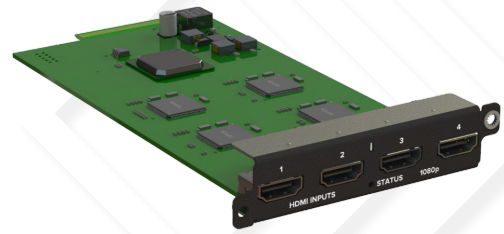
# Quad HDMI Input Module

HDMI Input Module

CM-HDMI-4IN

## OVERVIEW

Quad HDMI 1.4 input module supporting resolutions up to 1080p/60. Double the number of system inputs for up to 56 sources on a single 4RU CORIOmaster chassis.



### KEY FEATURES

- ◆ 4x 1080P/60 Inputs
- ◆ HDMI 1.4, HDCP 1.4

### Designed For

CORIOmaster CM-503 micro C3-510 mini and C3-540 master	Module installs in to any of the input or I/O slots
--	---

### Max Installable

C3-503 - CORIOmaster micro	2
C3-510 - CORIOmaster mini	4
C3-540 - CORIOmaster	14

### Constraints

None	Can be installed with other types of modules in the same system
------	---

## SPECIFICATIONS

Resolution Support (4:4:4)	640x480p (60, 72, 75, 85Hz), 720x487i (59.94Hz), 720x480i (59.94Hz), 720x480p (59.94Hz), 720x576i (50Hz), 720x576p (50Hz), 800x600p (56, 60, 72, 75, 85Hz), 980x980p (75Hz), 1024x768p (60, 70, 75, 85Hz), 1152x864p (70, 75Hz), 1280x720p (23.98, 24, 25, 29.97, 30, 50, 59.94, 60Hz), 1280x768p (60, 75, 85Hz), 1280x800p (60, 75, 85Hz), 1280x960p (60, 85Hz), 1280x1024p (50, 60, 75, 85Hz), 1360x768p (60Hz), 1366x768p (60Hz), 1400x900p (60Hz), 1400x1050p (50, 60, 75Hz), 1440x900p (60, 75, 85Hz), 1600x900p (60Hz), 1680x1050p (60Hz), 1920x720p (60Hz), 1920x1080i (47.96, 48, 50, 59.94, 60Hz), 1920x1080p (23.98, 24, 25, 29.97, 30, 50, 59.94, 60Hz)
Compatibility	HDMI 1.4, HDCP 1.4
Color Space	BT.601 on standard resolutions BT.709 for 720p, 1080i, 1080p
Color Format Supports	RGB, YCbCr 4:4:4, 4:2:2 & 4:2:0
Color Depth	8-bit
<b>Audio</b>	
Supported Sampling Rate	48KHz
Sample Size	24 bits
Supported Channels	1 Stereo pair on each input