



FAP62T

Strategy Series® II In-Ceiling 6" Coaxial Speaker System



FAP62T

Applications

The FAP62T combines superior coaxial loudspeaker performance with even dispersion and easy installation. A low profile enclosure and wide coverage make the FAP62T a perfect choice for low ceilings. The FAP62T will satisfy the needs of owners, architects, contractors, and consultants by delivering true, high fidelity sound reproduction in an attractive and easy-to-install system. The FAP62T is ideal for high-intelligibility voice, music, and signal reproduction in commercial, industrial, and institutional applications.

General Description

The FAP62T's 110° dispersion angle can reduce the number of loudspeakers necessary to achieve coverage in distributed systems with low ceilings.

The loudspeaker component matches the performance of the legendary Atlas Sound FA136 driver. High quality construction 6" coaxial cone type driver includes a 1" voice coil and polypropylene cone with a butyl rubber surround. The 19mm coaxially mounted tweeter is constructed of PEI. A high sensitivity of 88dB average (92dB peak) means less power may be required to achieve the desired SPL. This loudspeaker is factory assembled in an optimally tuned and ported deep drawn enclosure and includes a specially designed 32 watt low saturation 70.7V / 100V transformer. A convenient front mounted selector switch allows tap selection without the need to remove the speaker from the ceiling. This switch also includes a transformer bypass setting for 8Ω direct coupled operation.

Specifications

Power Rating	50 Watts
Transformer Taps	2, 4, 8, 16, & 32 Watts & 8Ω Bypass
Frequency Response	63Hz – 20kHz (±7dB)
Sensitivity (1W / 1M)	88dB
Woofer	6" Poly Cone with Butyl Rubber Surround
Woofer Magnet Weight	14 oz (398g)
Enclosure Volume	475 in ³
HF Driver	19mm Coaxially Mounted PEI Dome Tweeter
Diameter	12½" (318mm)
Overall Height	8.48" (215mm)
Cut-out Dimensions	11" (279mm)

Features

- Extended Low Frequency Response from the 475 in³ Optimally Tuned and Ported Deep Drawn Galvanized Steel Enclosure
- Easy Installation in Drop Tile or Sheetrock Ceilings Via C-Ring / V-Rail Tile Bridge and "Dog Leg" Mounting System (Included)
- Front Mounted Tap Selector Switch for Easy System Tuning Adjustments Include Transformer Bypass Setting for 8Ω Direct Coupled Operation
- Unique "Trap Door" Input Section Allows for Through Conduit Runs with Rigid or Flex Conduit
- 4 Pole Detachable "Phoenix" Style Connector Allows Easy Pre-Wiring and Is Convenient for Daisy Chaining Additional Strategy Series Full Range Speakers or Subwoofers
- "Press Fit" Grilles Blend Better into Contemporary Architecture
- Enhanced Quality 70.7V / 100V Internal Transformers Minimize Insertion Loss and Maintain Low Frequency Response While Providing Increased Output for Higher SPL Applications
- UL Listed 1480

©2017 Atlas Sound L.P. All rights reserved. Atlas Sound and Strategy Series are trademarks of Atlas Sound L.P. All other trademarks are the property of their respective owners. ATS001372 RevG 1/17

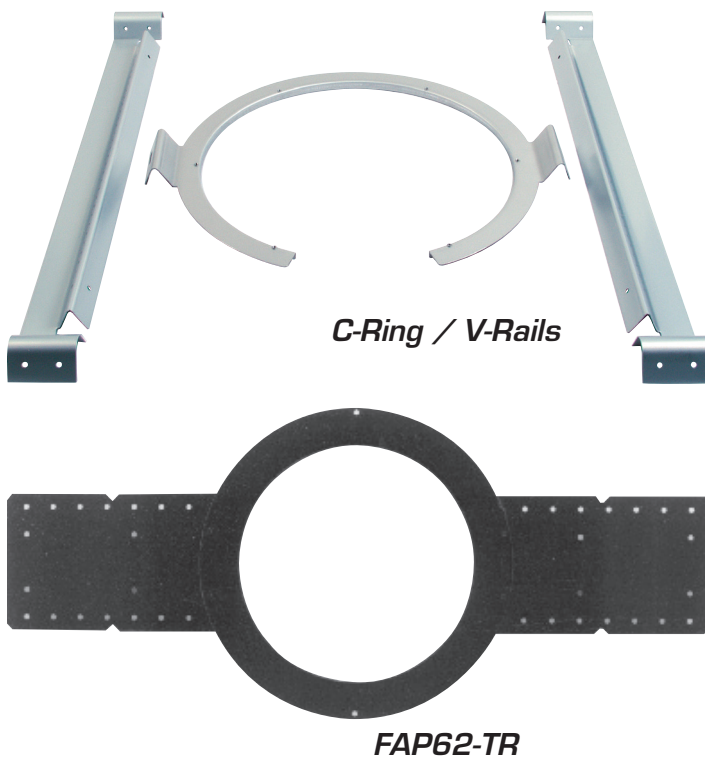
Mounting Accessories

Mounting is simplified with Strategy Series® style "Dog Leg" tabs that allow easy installation into drop tile or drywall ceilings with provided tile bridge assembly. The tile bridge consists of two "V" shaped formed mounting rails and a C-Ring assembly. The C-Ring can be attached to the rails with the screws provided to extend support to the T-bar grid in suspended ceiling applications. Multiple hole locations are provided to allow the C-Ring to be positioned to the outer edge of the tile if necessary.

For existing dry-wall applications the tile bridge C-Ring and support rails can be inserted into the hole cut for the FAP62T. For easy positioning the "V" shaped support rails match the shape of the C-Ring tabs for easy maneuvering and location when working "blindly" above the deck. A uniquely designed "easy access" input panel on the side of the enclosure allows for "thru" conduit runs using flexible or rigid conduit. Below this cover resides a detachable Phoenix / Euro style locking four-pole connector, which provides for easy daisy chain wiring to other full range 70.7V loudspeakers or Atlas Sound FAPSUB subwoofers. The package includes an attractive press-fit grille, which nicely matches contemporary architecture.

For new construction drywall ceiling applications, the optional FAP62-TR trim ring is available. This unit provides a marked location for drywall installers to cut around essentially reserving the desired location in the ceiling until final installation of FAP62T. Mounting holes are provided to accommodate 16" or 24" OC stud / joist mounting.

A support ring is also provided on the top of the FAP62T enclosure to facilitate an auxiliary support cable. It is recommended that this secondary support be utilized in drop ceilings for safety and seismic considerations.



Architect & Engineer Specifications

The loudspeaker system shall be Atlas Sound FAP62T. System shall include a high performance 6" coaxial loudspeaker, ported bass reflex enclosure and press-fit grille for conventional ceiling installation.

Frequency response for the system shall be 63Hz – 20kHz (± 7 dB). Sensitivity shall be 88dB average.

Loudspeaker shall be comprised of a 6" coaxial cone type driver. Cone shall be constructed of polypropylene with a butyl rubber surround. The 19 mm tweeter shall be constructed of PEI. Magnet shall be a minimum of 10 oz (264g) and the voice coil diameter shall be 1" (25 mm).

Transformer shall be a 70.7V / 100V type with 2, 4, 8, 16, and 32 watt primary taps (@70.7V) with a front mounted tap selector switch to include transformer bypass setting for 8 Ω direct coupled operation.

Enclosure shall be a deep drawn steel enclosure design. Internal volume shall be 475 in³. To facilitate connection in conduit systems, enclosure shall be equipped with an access panel covering a recessed terminal cup. This cover shall provide a combination $\frac{3}{4}$ " (19mm inside diameter) / 1" (25mm inside diameter) knock-out on the side access and a top access compression fitting / strain relief to facilitate flexible conduit up to 22mm outside diameter or 1" (25mm inside diameter) conduit when the compression fitting is removed.

External wiring shall be accomplished via a removable lockable wiring connector with screw-down terminals to provide both secure wire termination and pre-wiring capability before loudspeaker installation. The 4 pole locking connector shall facilitate in/out connections and shall be located in the recessed area behind the conduit access panel.

Seismic support eye shall be provided on top of enclosure for additional suspension point when used in drop tile ceilings. Construction of enclosure shall be a minimum of 18-gauge deep drawn galvanized metal.

The system shall include a support backing plate to reinforce the ceiling material and tile support rails for use on either 2' x 4' (609mm x 1219mm) or 2' x 2' (609mm x 609mm) suspended ceiling tiles. This assembly can all be installed from beneath the ceiling tile.

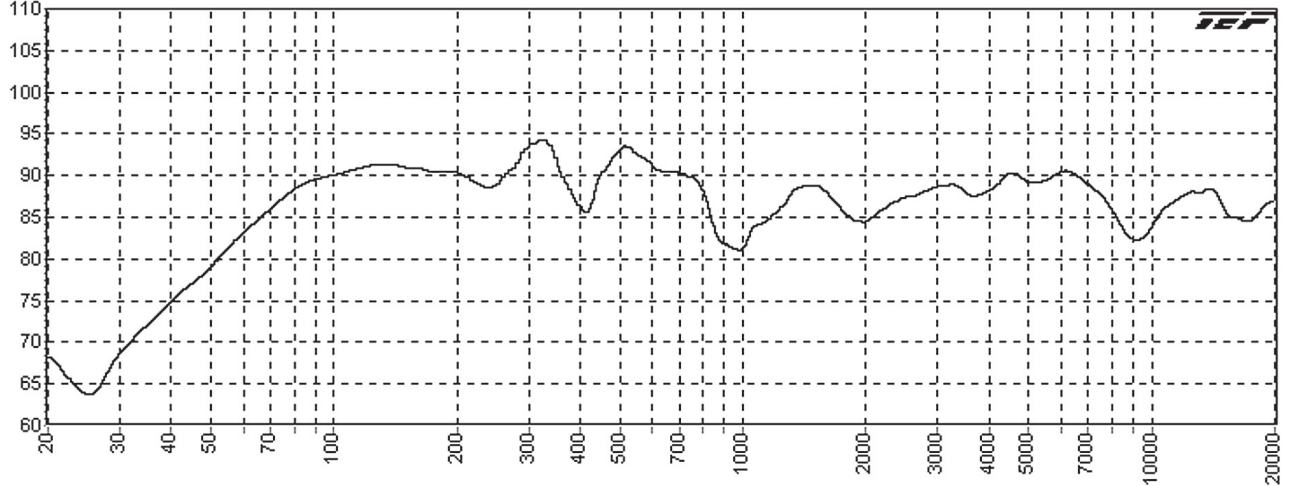
Overall front face diameter shall not exceed 12 $\frac{1}{2}$ " (318mm); overall depth from the bottom of the ceiling shall not exceed 8.48" (215mm).

Grilles shall be press-fit, manufactured from 24-gauge perforated steel mesh and finished in white epoxy. Round grill shall be 10.48" (266mm) diameter.

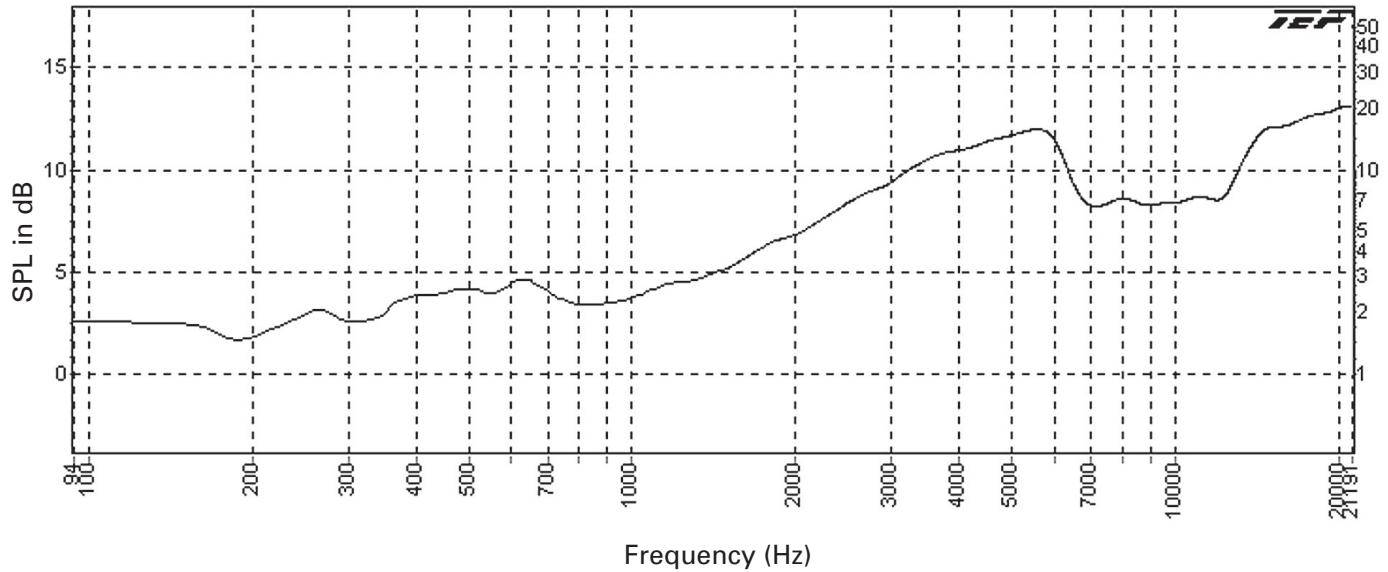
The loudspeaker shall be the Atlas Sound FAP62T.

©2017 Atlas Sound L.P. All rights reserved. Atlas Sound and Strategy Series are trademarks of Atlas Sound L.P. All other trademarks are the property of their respective owners. ATS001372 RevG 1/17

FAP62T Frequency Response (Transformer By Passed)

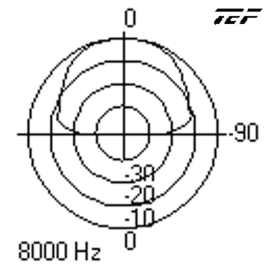
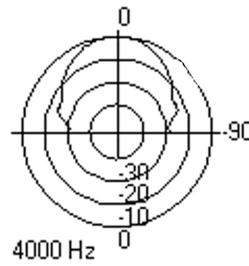
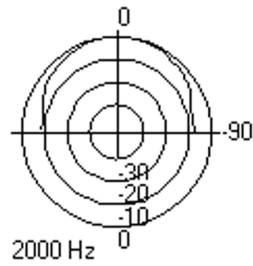
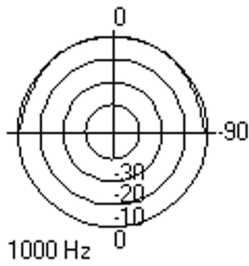
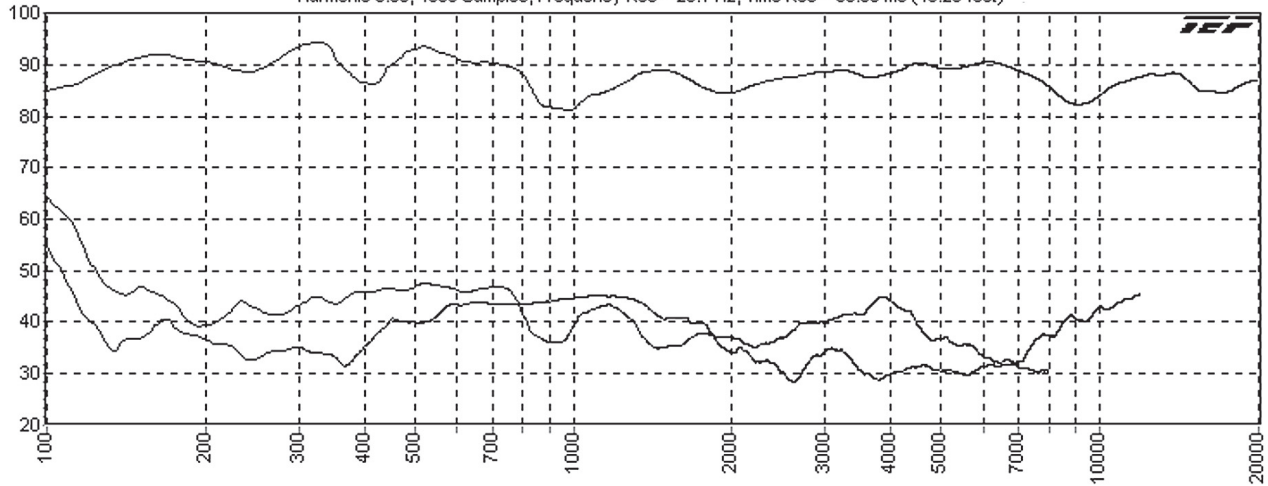


FAP62T Directivity vs Frequency



FAP62T Harmonic Distortion

Harmonic 3.00, 4096 Samples, Frequency Res = 28.1 Hz, Time Res = 35.58 ms (40.20 feet)



©2017 Atlas Sound L.P. All rights reserved. Atlas Sound and Strategy Series are trademarks of Atlas Sound L.P. All other trademarks are the property of their respective owners. ATS001372 RevG 1/17