

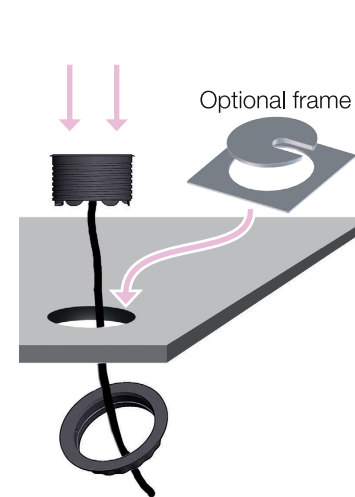
### CONTENT:



### A DRILL

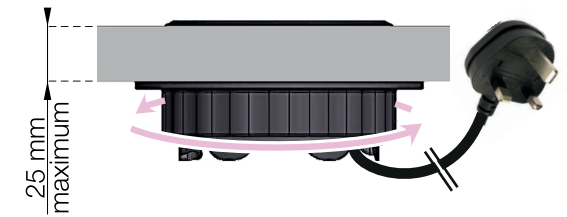


### B INSERT



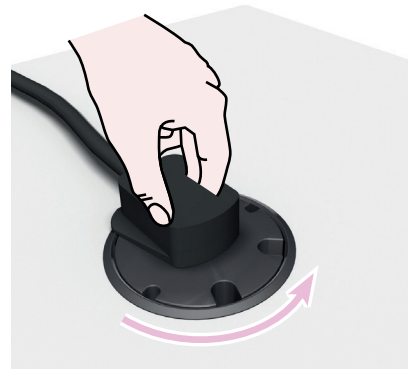
### C TURN CLOCKWISE & PLUG IN

Turn the plastic fastening nut as far up the thread as possible. Make sure that it has been thoroughly tightened. Lastly, plug the plug into the wall socket.



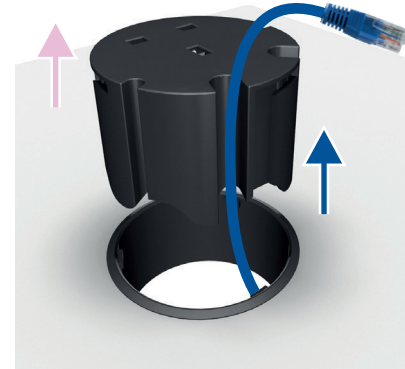
### 1 CONNECT & RELEASE

Rotate plug counter-clockwise until loose.



### 2 ORGANIZE

Cables according to size.



### 3 LOCK

Rotate plug clockwise to reattach.

