

CM-AVIP-IN-1USB-1ETH Streaming media and 4K playback input module

Quick Start Guide V1.10

Firmware version M403 and above

QSG-CM-AVIP-IN V1.10

Mar 2017

In this guide

About your Streaming media and 4K playback input module	2
Quick start guide	3
Checking and updating the CORIOmaster firmware	9
Checking your firmware version and downloading new firmware	10
Updating the firmware	10
Regulatory compliance	11
Contact us	12

Get more help



There are more Quick Start Guides available on the USB drive that came with your CORIOmaster. CORIOgrapher now comes with fully searchable help, just select **?** and search, or ask a question.

Thanks for buying this Streaming media and 4K playback input module. The Streaming media and 4K playback input module allows you to decode and play media and images from a USB drive, and video streams from IP sources. Sources include streaming server, and from any device when used with an IP encoder, such as the Magenta™ ENCODER-100.

Features

- Play two simultaneous channels of media, including IP streams
- Play video clips from USB drive up to 4K @30 Hz
- Play still images up to 8K
- Play media from streaming server
- Create and save up to 20 playlists
- Primary channel supports up to 4K @30 Hz
- Secondary channel supports 1080p @60 Hz
- IP streams up to 1080p @60 Hz
- Full resolution and framerate scaling
- Start playing media when your CORIOmaster™ starts
- Supports USB 2.0 and USB 3.0

Get more help



There are more Quick Start Guides available on the USB drive that came with your CORIOmaster. CORIOgrapher now comes with fully searchable help, just select **?** and search, or ask a question.

This Quick Start Guide assumes that your Streaming media and 4K playback input module is installed in a CORIOmaster™, CORIOmaster mini™, or CORIOmaster micro™.

If you need help installing your Streaming media and 4K playback input module, contact your supplier, consult an experienced AV installer, or contact tvONE support. Contact details are at the back of this guide.

About your Streaming media and 4K playback input module



USB (LED) Indicates the status of the USB drive. Green means that the USB drive is working correctly. Red means that the USB drive is over current.

USB 3.0 Connect a USB drive to play media directly.

USB 2.0 For best results, we recommend using quality USB drives compatible with USB 3.0.

ST1 (LED) Indicates the status of the card. Green means that the card is working correctly. Red means that the card is starting, or that there is a problem.

ST2 (LED) Indicates the status of the module. Green means that the module is working correctly. Red means that the module is starting, or that there is a problem.

LAN Connect an Ethernet cable to play media over IP.

If any status indicator stays red, restart your CORIOmaster. If that doesn't work, contact tvONE support. Contact details are at the back of this guide.

Supported formats

The Streaming media and 4K playback input module supports the following formats:

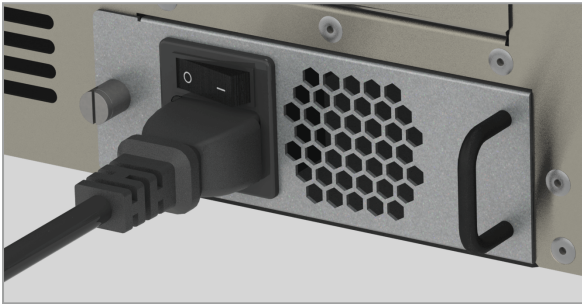
Video Formats	.mp4, .mov, .mkv, .m4v, .ts, .mts, .m2ts, .mt2	Audio formats	.mp3, .aac
----------------------	--	----------------------	------------

Quick start guide

✔ It's easy to get started with the Streaming media and 4K playback input module, but if you want more help with any of these steps, or with setting up and using streaming media, select **?** in CORIOgrapher™ and search, or ask a question.

Setting up the Streaming media and 4K playback input module

1. Connect your cables and power on your CORIOmaster™, CORIOmaster mini™, or CORIOmaster micro™.

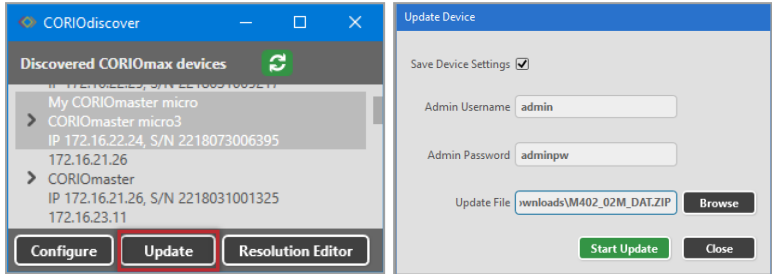


To stream media, connect an Ethernet cable to the Streaming media and 4K playback input module, or connect a USB drive to play media directly.



Make sure your CORIOmaster is connected to your display devices and to an AC power outlet.

2. Download the latest firmware for your CORIOmaster from tvone.com/firmware-updates.
3. Use CORIOdiscover™ to update your firmware.




Read more about updating firmware on page 9.

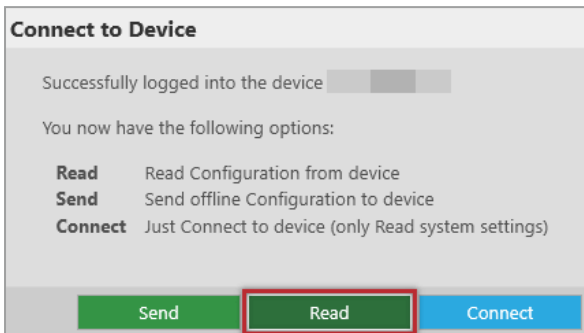
4. Request the latest version of the CORIOgrapher software from the Downloads tab at tvone.com/new-coriographer-videowall-design-software.
5. Install the latest software.



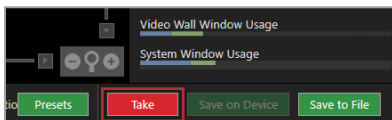
The latest version of CORIOgrapher includes help files. If you need help with any of the following steps, select ? in CORIOgrapher and search, or ask a question.

Connecting to CORIOgrapher™ and choosing network settings

1. Open CORIOgrapher , connect to your CORIOmaster, and read the configuration from your device.



Make sure you have a video wall set up that includes at least one window that uses a source from the Streaming media and 4K playback input module, and select Take.

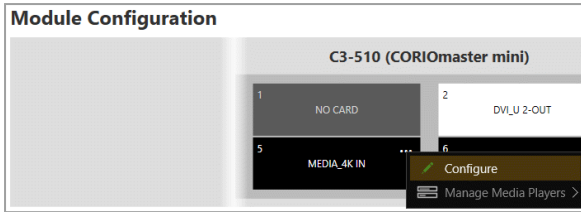


2. **OPTIONAL:** if you only want to play media from a USB drive, you don't need to do this step.

If you want to stream media over IP, choose network settings for your Streaming media and 4K playback input module.

Select  > Module Configuration.

Find the Streaming media and 4K playback module that you want to set up, and select  > Configure.



Module Settings [Slot5]

Module health

Networking

Configuration:

IP Address:

Subnet Mask:

Default Gateway:

DNS (Preferred):

DNS (Alternative):

MAC Address:

Link Speed:

If you choose DHCP, an IP address is assigned to you.

If you choose a static IP address:

- Enter a value for your IP address and subnet mask.
- If you want to stream from the internet, enter a value for your gateway.
- If you want to refer to a source by name, enter a value for DNS.

Static IP address

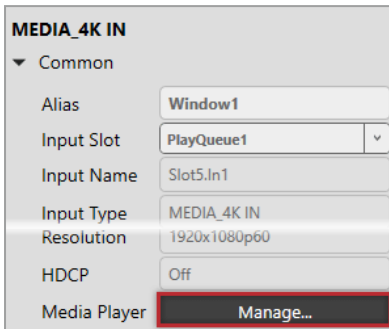


If you choose a static IP address, make sure you enter a unique value for your IP address. Using the same IP address for multiple devices can cause your devices to disconnect.

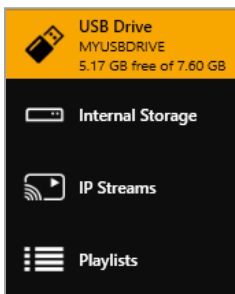
If you need help with network settings, contact your network administrator.

Playing media and streams

1. Double-click the window you wish to play streaming media, and select (Media Player) Manage.

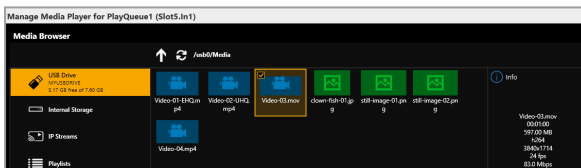


2. Select your media source.

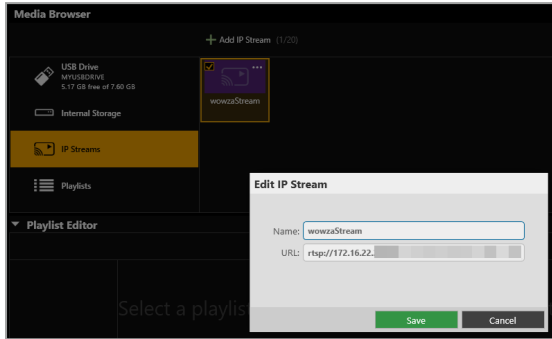


Your media items appear as icons. Still images are green, videos are blue, saved media streams are purple, and playlists are cyan.

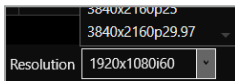
Information about the media item appears on the right.



3. **OPTIONAL:** if you want to stream media, add your streams.
 - If you want to stream from the internet, add the stream. Select IP Streams > Add IP Stream and enter a useful name and the URL of the media stream.

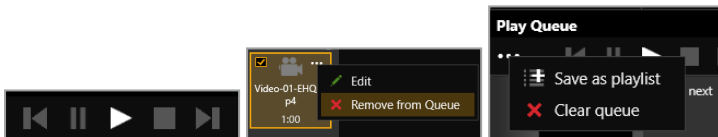


4. Choose a resolution for your media stream.



Tips and recommendations for choosing the best resolution are available in CORIOgrapher Help.

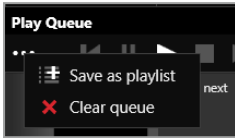
5. Drag media items and streams into the play queue and use the playback controls to play your media. Check that the media is playing on your video wall.
6. Use the playback controls start, stop, pause, skip to the next item, and return to the previous item. You can select and delete media items, or clear the entire play queue.



To loop the play queue, first stop playback.



7. **OPTIONAL:** you can save your play queue as a playlist.



You can also create playlists in the playlist editor.

For more information, see CORIOgrapher Help.

Checking and updating the CORIOmaster firmware

You must be connected to your CORIOmaster™ to check and update firmware.

You check the firmware of your CORIOmaster on the **Settings** window of the CORIOgrapher™ software. You update the firmware of your CORIOmaster on the **Update Device** window of the CORIODiscover™ software.




When you update the firmware, any unsaved configuration in CORIOgrapher is deleted. Make sure you save any configurations that you want to keep before you start the updating process. You can also save a backup file on your PC. Read about saving a backup file on page 1.

Before you start

To install the latest CORIOmaster firmware, you need CORIODiscover V1.3 or above. V1.3 of CORIODiscover is available from the CORIOmaster C3-540 page at tvone.com/firmware-updates.

Checking your firmware version and downloading new firmware

CORIOdiscover warns you if you try to install firmware that is older or the same as your existing firmware. If you don't want to check your existing firmware version, skip to step **2**.

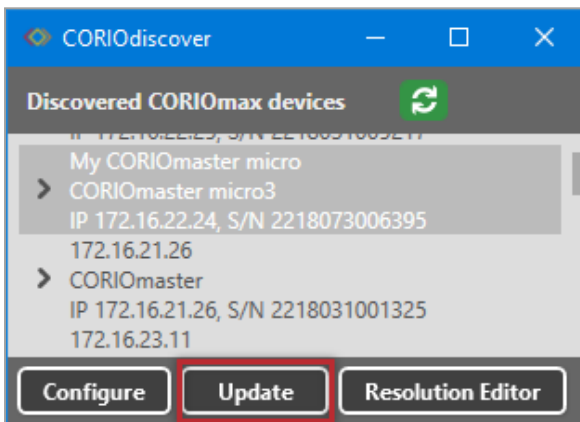
1. In CORIOgrapher, select  > System and look for your current firmware version.
2. Check for newer firmware at tvone.com/firmware-updates.

Select your device from the list and compare the firmware version to your own.

- If you have a CORIOmaster, select CORIOmaster C3-540.
 - If you have a CORIOmaster mini™, select CORIOmaster mini C3-510.
3. If your firmware is out of date, download the zipped DAT file.
You don't need to extract the DAT file.

Updating the firmware

1. In CORIOdiscover, select .

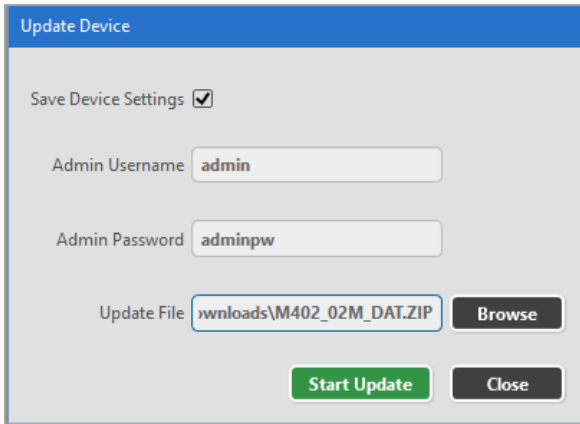


2. Select your CORIOmaster from the list and select Update.

3. To save your CORIOmaster settings, select Save Device Settings.

When you save your settings, your CORIOmaster keeps all your saved configurations and video walls.

4. Enter your administrator login details.



Update Device

Save Device Settings

Admin Username

Admin Password

Update File

5. Browse to the zipped DAT file that you downloaded.
6. Select Start Update.

When the update is finished, you can log in to your CORIOmaster again.

Regulatory compliance

This product has been tested for compliance with appropriate FCC and CE rules and regulations. The power adapter and supply has been tested for compliance with appropriate UL, CUL, CE, PSE, GS, rules, regulations and/or guidelines. This product and its power adapter is RoHS compliant.

Contact us

 www.tvone.com

 info@tvone.com

 **Support NCSA:** tech.usa@tvone.com

 **Support EMEA:** tech.europe@tvone.com

Information in this document is subject to change without notice. No part of this publication may be reproduced, stored in a retrieval system, or transmitted in any form or any means electronic or mechanical, including photocopying and recording for any purpose other than the purchaser's personal use without the written permission of tvONE.

Copyright © 2017 tvONE. All rights reserved.



See our full range of scalers and video processors at www.tvone.com

