



AL123A-B

Dual 12" 3-Way Powered Large Format Line Array Speaker

Features

- 3-Way Full Range Speaker System
- 2x 12" Low Frequency Drivers
- 4x 6" Midrange Drivers
- 2x 1.4" High Frequency Drivers
- Baltic Birch Cabinet Construction
- EZAL™ Rigging System
- Finished in Heavy Duty Black Duracoat™

Applications

The A-Line AL123A-B Line Array System is ideal for use in large venues where excellent speech or live music reproductions is required

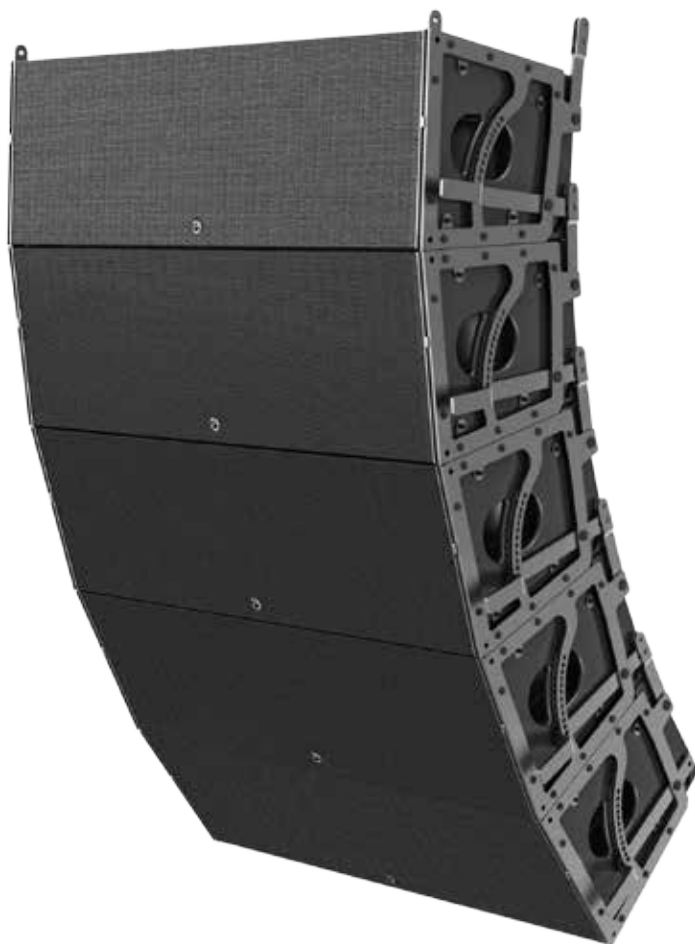
- Houses of Worship
- Large Concert Venues
- Large Auditoriums
- Large Outdoor Venues

General Description

The Atlas A-Line Acoustics AL123A-B is a powered, large format line array system. These arrays are highly intelligible with wide coverage and high impact. AL123A cabinets are amplified with a total of 3600 Watts on board. The DSP in each cabinet is network controlled, allowing precise tuning of the array system. Enclosures feature A-Line's exclusive integrated patented EZAL™ rigging system for faster, safer and easier set up. Up to eight boxes can be individually aimed under load, while flown or stacked, by just one or two people. Made in the USA with the highest-grade components, A-Line Acoustics AL123 boxes are constructed of birch plywood with threaded fittings for attachment of speakers, LSRs, rigging and amplifiers. Optional wheel boards ¼ x ½ truck pack and fly frames are also available.

Specifications

Total Power (RMS)	3600 Watts
LF Driver Power (RMS)	2400 Watts
MR Driver Power (RMS)	600 Watts
HF Driver Power (RMS)	600 Watts
Impedance LF/MR/HF	4Ω / 4Ω / 8Ω
MAX SPL	136dB
Frequency Response	70Hz - 18kHz (±3dB)
Connectors	I/O PowerCON™ and M&F XLR
Height	13.9" (353.1mm)
Width	45.3" (1151mm)
Depth	16.3" (414mm)
Weight	133 lbs (60.33kg)



AL123A-B



AL123A-B
No Grille

©2014 Atlas Sound L.P. All rights reserved. Atlas Sound and Strategy Series are trademarks of Atlas Sound L.P. All other trademarks are the property of their respective owners. AT5004900 RevA 1/14