

Monitor Arm LC56 for Conceptum
 In order to achieve a correct mounting of Monitor Arm LC56, you are advised to read and follow the instructions step by step. If there are incomprehensible steps, please let us know and we will get back to you.

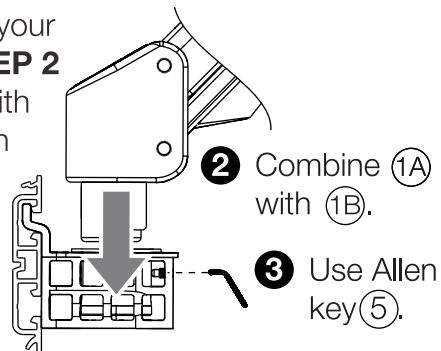
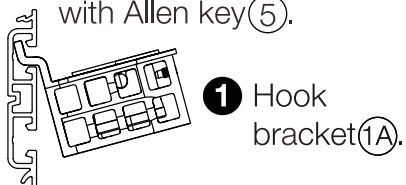
Part Check-List

STEP 1

①A		x1	③B		x2
①B		x1	④		x1
②A		x2	⑤		x1
②B		x2	STEP 2		
③A		x2	⑥A		x4
			⑥B		x4
			⑦		x4
			⑧		x1

STEP 1

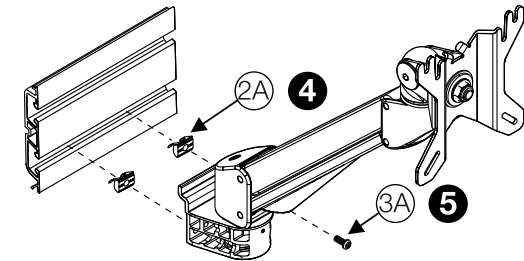
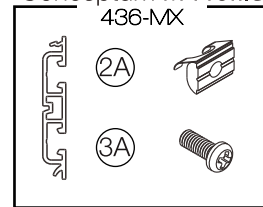
Hook the bracket ①A into the track of your compatible aluminium profile (See **STEP 2** for compatibility). Combine bracket with monitor arm ①B and secure its position with Allen key ⑤.



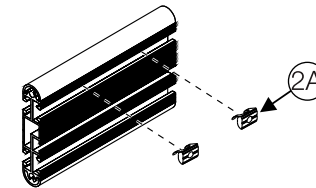
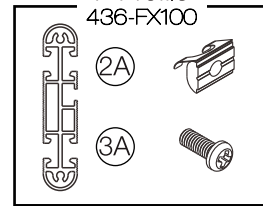
www.kondator.se

Revised 200211

Conceptum M-Profile 436-MX

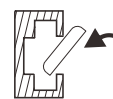
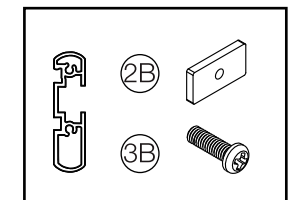
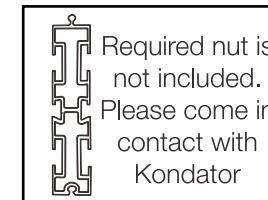
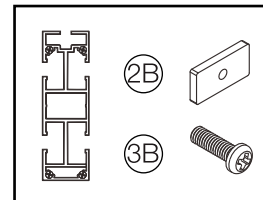


F-Profile 436-FX100

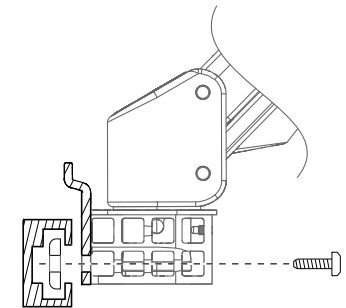


Identify the correct nuts and screws using the boxes. Then, fixate the monitor arms to the desired position on the aluminum profile.

Other possible assemblies



Insert the nut with the blocky side towards yourself and the rounded side towards the aluminum profile for best grip (as illustrated to the left). Once inserted, make sure to center and align the components before fastening the screws (as illustrated to the right).



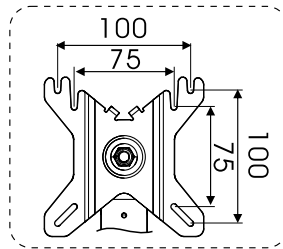
Assembly Guide

STEP 2

If the VESA mount fits with the monitor, proceed with the usage of screws (6A). (See left side illustration below).

In case it does not, assembly using the distance nuts (7) and long screws (6B). This is usually the case with screens that have a sunken VESA surface (see right side illustration below).

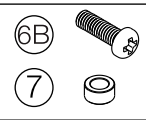
Secure the assembly with a screwdriver (not provided).



1 Mount both upper screws half-way into the threads of the monitor.

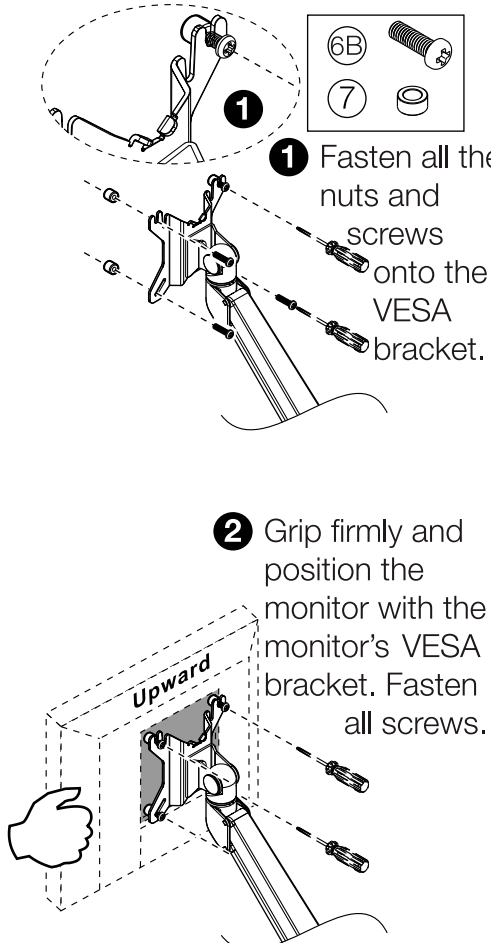
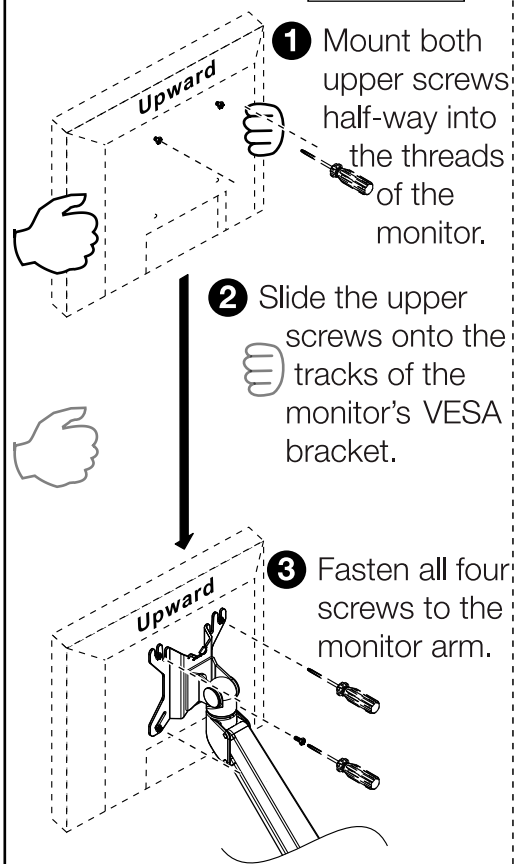
2 Slide the upper screws onto the tracks of the monitor's VESA bracket.

3 Fasten all four screws to the monitor arm.



1 Fasten all the nuts and screws onto the VESA bracket.

2 Grip firmly and position the monitor with the monitor's VESA bracket. Fasten all screws.

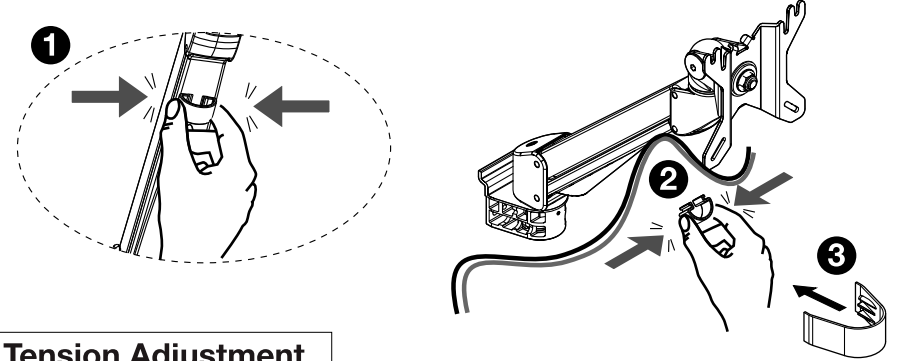


www.kondator.se

Assembly Guide

STEP 3

Unattach the small cable collector and route the cables through. Once satisfied, re-attach the collector back into place, and cover the bottom bracket.



Tension Adjustment

Caution:

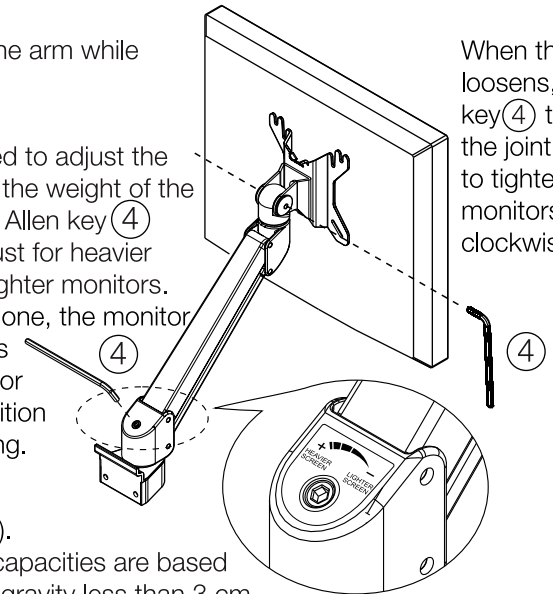
Support and hold on to the arm while adjusting the tension.

Adjustment:

Use the Allen key provided to adjust the tension to correspond to the weight of the desired monitor. Turn the Allen key (4) counter-clockwise to adjust for heavier monitors; clockwise for lighter monitors. Once the adjustment is done, the monitor should be experienced as weightless and the monitor should remain in any position without dropping nor rising.

Recommendations:

- 8-14 kg (17.6-30.8 lbs).
- The products loading capacities are based on monitors' center of gravity less than 3 cm from the end of the VESA interface.
- Loading capacity could be reduced if the monitor size is greater than 26 inches or if the thickness exceeds 5.5 cm.
- All product specifications in catalogues are subject to change without notice.



When the joint loosens, use Allen key (4) to tighten the joint. Clockwise to tighten for heavier monitors; Counter-clockwise to loosen.