

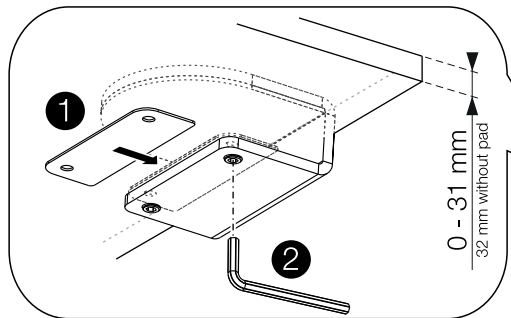
Monitor arm OSLO - Duo, Part 1

In order to achieve a correct mounting of Monitor Arm OSLO, you are advised to read and follow the instructions step by step. If there are incomprehensible steps, please let us know and we will get back to you.

Part Check-List

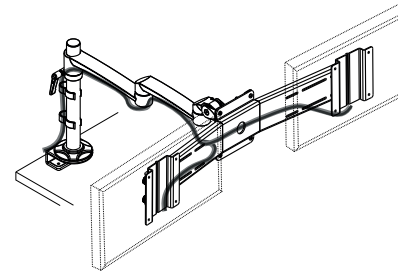
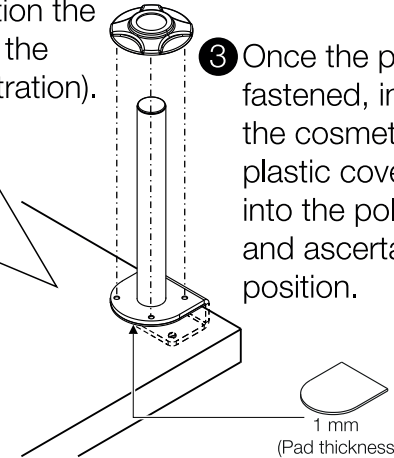
①		x1	⑤		x1
②A		x2	⑥		x1
②B		x2	⑦		x4
③		x1	⑧		x1
④		x1	⑨		x2

1 Position and mount the clamp ① to the table. For tables thinner than 21 mm, use screws ②B. Position the metal sheet ③ and fasten it using the screws and Allen key ④ (See illustration).



NOTE! For tables thicker than 21 mm, use screws ②B.

3 Once the pole is fastened, insert the cosmetic plastic cover ⑤ into the pole and ascertain its position.



Monitor arm OSLO - Duo, Part 2

In order to achieve a correct mounting of DUO Monitor Bar, you are advised to read and follow the instructions step by step. If there are incomprehensible steps, please let us know and we will get back to you.

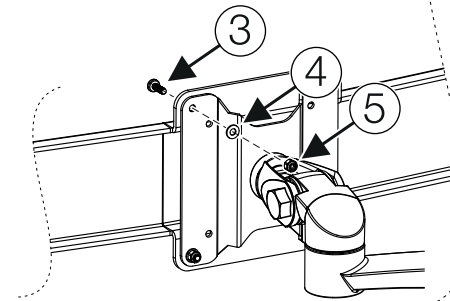
Part Check-List

①		x1	④		x4
②		x2	⑤		x4
③		x12	⑥		x8

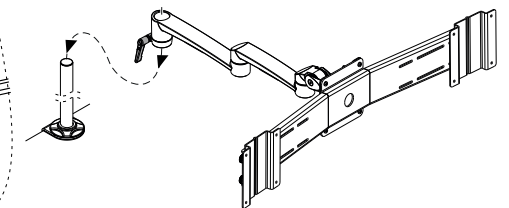
TOOLS NEEDED (Not included)

●		x2
---	--	----

2 Mount the Dual bar ① to the monitor arm ⑥. Lift the bar into position by aligning the VESA holes and pass the screws ③ through one by one. If necessary use the washers ④ and fasten using the nuts ⑤.

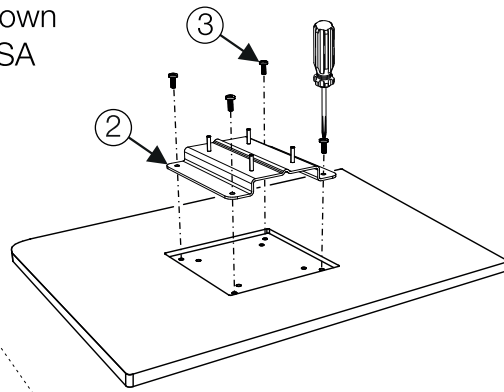


Insert the arm onto the mounted pole. Adjust to desired height using the black plastic lever.

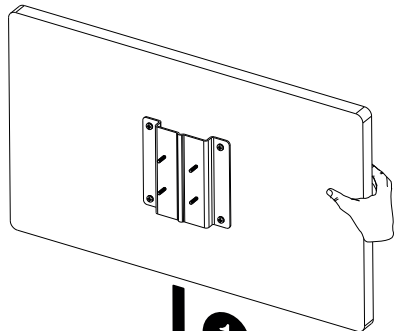


Assembly Guide

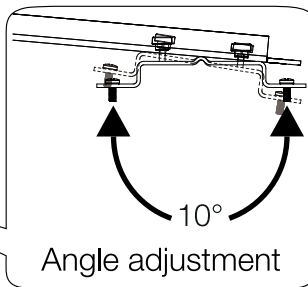
- 3** Place the LCD monitor face down on a flat surface. Align the VESA bracket **2** holes and fasten using screws **3**. Repeat procedure for both LCD monitors.



- 4** Lift the VESA bracket with the mounted LCD monitor, and examine how close the monitor can be to the center of the bar (see step **6**). Then, insert the VESA bracket pins into the track of the bar and lock them to the track using the knob nuts **6**. Angle the monitor as you see fit. Repeat procedure for both VESA brackets.

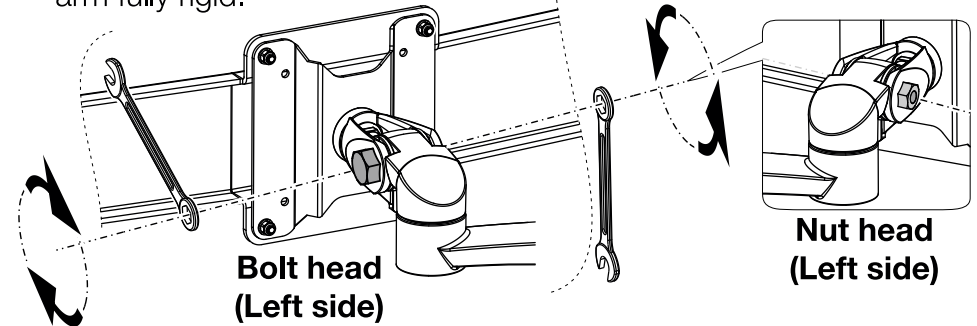


- 1** Position VESA into bar
- Turn nuts clockwise **2**
- Use saved nuts to fasten



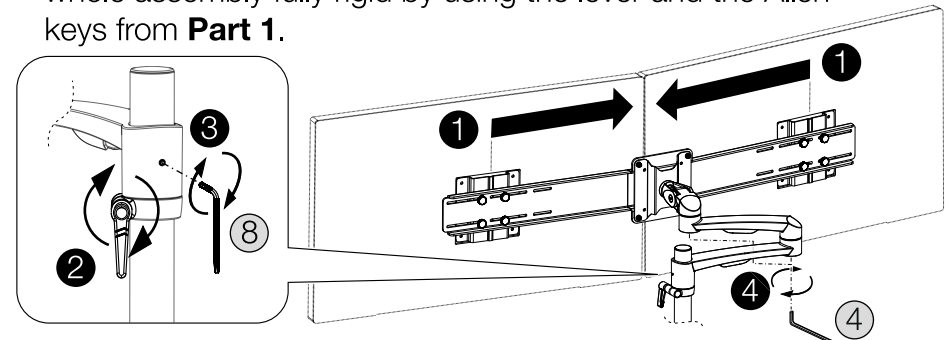
Assembly Guide

- 5** Use two 17 mm wrench to tighten the bar to a vertical position. One wrench must be used for turning the head of the bolt and one for the nut head to tighten hard in order to keep the monitor arm fully rigid.



- !** DO NOT SKIP ABOVE STEP.

- 6** The Dual Bar is now fully assembled. Make sure the monitor screens are as close to each other as possible and make the whole assembly fully rigid by using the lever and the Allen keys from **Part 1**.



- 7** Finish installation by directing the cables from the LCD monitor through both black monitor arm collectors, and finally both cable clips **9** as illustrated below.

