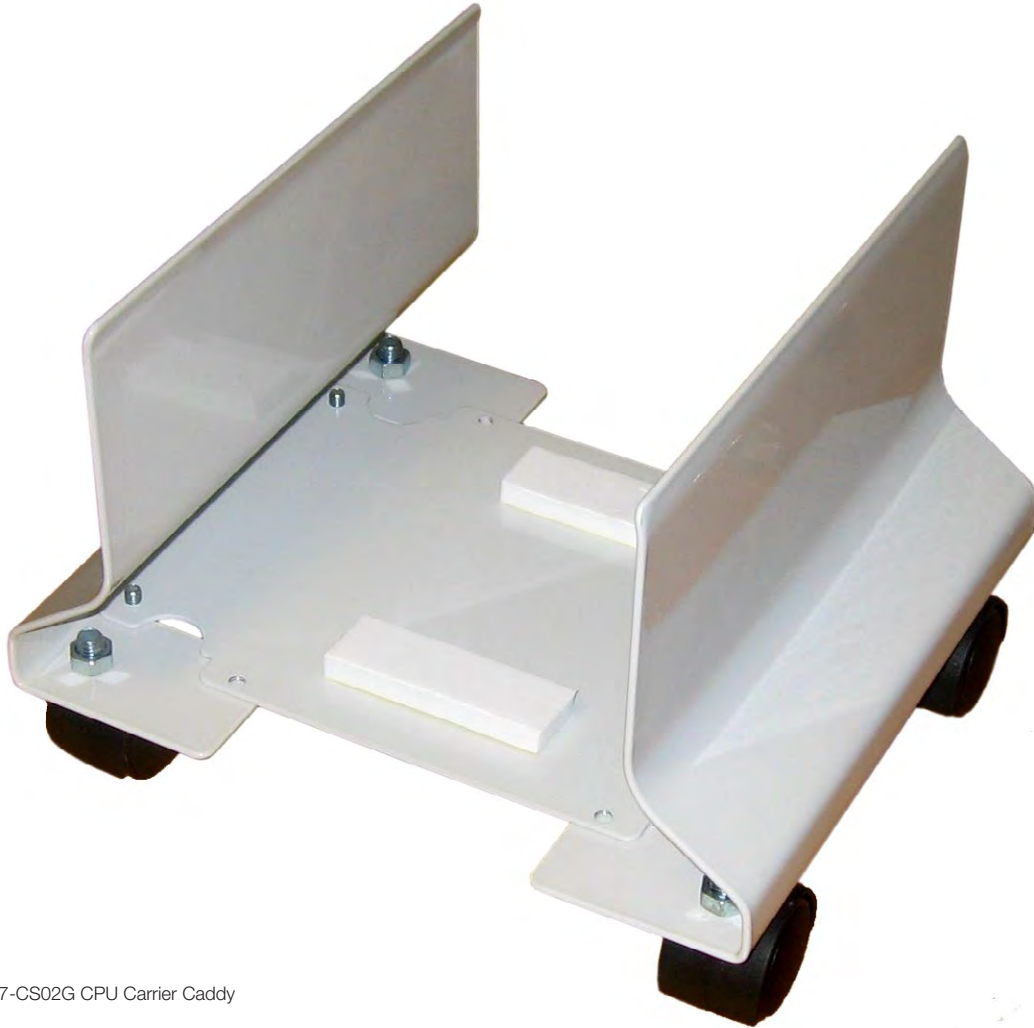


Caddy CPU Carrier



Part no 427-CS02G CPU Carrier Caddy

“With Feet Firmly on the Ground”

Don't put your CPU at risk! Avoid heavy lifting or equipment damage with Caddy. Low centre of gravity and well-positioned wheels facilitate smooth, safe CPU movement.

Caddy holds the computer vertically, just off the floor. A robust design with adjustable width. Delivered with lockable wheels and slip-free surfaces, for added equipment security.

SPECIFICATIONS

- Sturdy, with low centre of gravity
- 4 lockable wheels
- Adjustable width
80-252 mm
- Part no 427-CS02G